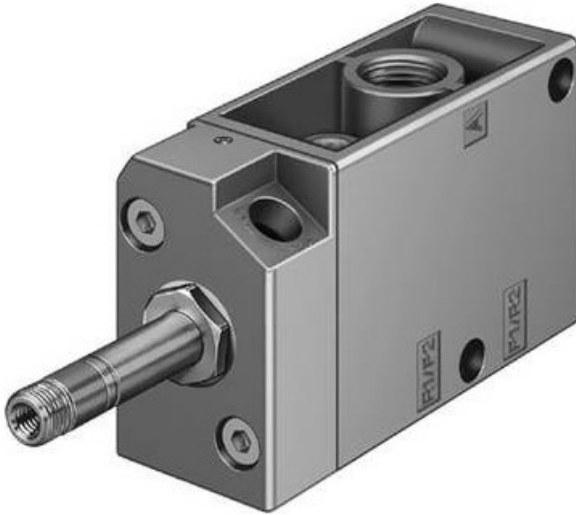


Solenoid valve 3/2 nc g1/4"



Product codes:

Reference:
PC421-00051
EAN13: -
UPC: -

Product attributes:

Product description:

You will find enclosed the MFH-3-1 / 4 solenoid valve with manual auxiliary control, without coil and without female connector. Where Coil and Female Connector must be ordered separately. They can be mounted on common-feed PAL terminal strips or on common PRS supply and exhaust terminal blocks. The valves are fixed on the bars and blocks with hollow screws. The strips and the connection block have 2 to 6 valve positions. The free slots of the PAL terminal strips can be closed by means of cap nuts and those of the PRS blocks by plates shutter. Dispensers can be fed individually at a pressure

Technical characteristics / Values Distributor
function / 3/2 monostable, closed Actuation / electric mode Width / 30.5 mm Nominal flow rate normal / 800 l / min Operating pressure / 1.5 ... 8 bar Design / Flat seat Recall Type / Mechanical Spring Degree of protection / IP65 Approval / c UL us - Recognized (OL) Nominal diameter / 7 mm Modular dimension / 32 mm Exhaust function / adjustable Principle of tightness / soft (joint) Mounting position / indifferent Auxiliary / bistable manual control Control type / piloted Flow direction / irreversible Overlap / negative overlap Switching time Off / 29 ms Switching time On / 10 ms Positive test pulse max. with signal 0 / 2.200 ?s Negative test pulse max. with signal 1 / 3,700 ?s Coil characteristics / See coils, to be ordered separately Service fluid / compressed air according to ISO8573-1: 2010 [7: 4: 4] Note on Control and Pilot Fluid / Operation with Lubrication Possible (Required for Further Operation) Corrosion resistance class KBK / 1 - Low corrosion effects Storage temperature / -20 ... 60 ° C Fluid temperature / -10 ... 60 ° C Ambient temperature / -5 ... 40 ° C Product weight / 320 g Electrical / coil connection F, to be ordered

separately Fixed mounting mode: on terminal block / with through hole Pilot Exhaust Fitting 82 / M5 Pneumatic connection 1 / G1 / 4 Pneumatic connection 2 / G1 / 4 Pneumatic connection 3 / G1 / 4 Note on the subject / RoHS Compliant Material seals / NBR Body Material / Die Cast Aluminum